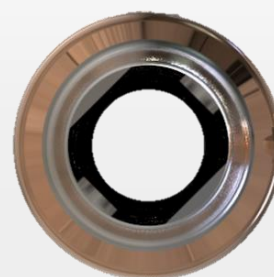
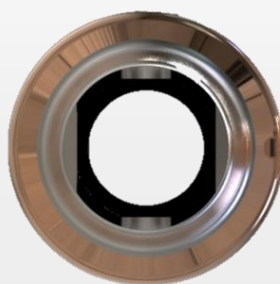


Advantages of the Docklocs® Attachment System

Abutments with an 18° Angulation

With these Abutments, divergences between implants of up to 65° can be corrected. With the 18° angled Abutments, the dentist is able to cover a wide range of clinical implant situations. The angled Abutments are available with **two connection variants**. This allows the position of the implant to be better compensated.



Docklocs® abutment, straight

Docklocs® secondary part, 18° angled

Connection variant A

Connection variant B, 45° twisted

Retention inserts (matrices) made of high performance plastic

The outstanding properties of the retention inserts are their very high hardness combined with high toughness and dynamic load capacity (number of load cycles). They also have a high resistance to chemicals and lipids (grease) with a low tendency to absorb water. These properties make them ideal for applications in direct contact with body fluids, medicines or active ingredients. They also show outstanding resistance to disinfectants containing alcohol.



Advantages of the Docklocs® Attachment System

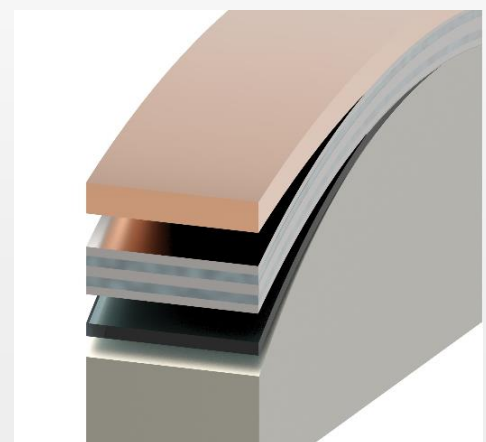
Biocompatible Ceramic PVD Hard Coating

The coating is an extremely hard zirconium carbonitride layer (ZrCN). It has a high abrasion and wear resistance. In addition to the functional surface properties, the red-golden coloration is impressive. Zirconium surfaces have the advantage of having twice as low plaque affinity as titanium and thus largely preventing inflammatory reactions of the soft tissue.

Microhardness of various surfaces

Coating	Shortcut	Color	Hardness (in HV)	Thickness (in µm)	Friction coefficient against steel
Titan-Nitrid	TiN	gold	2200	1,0-4,0	0,4
Zirkon-Nitrid	ZrN	light-gold	2500±500	1,0-4,0	0,3
Titan Carbonitrid	TiCN	altrose	3100	1,3-3,0	0,2
Zirkoniumcarbonitrid	ZrCN	red-gold	3200±300	1,0-3,0	0,3

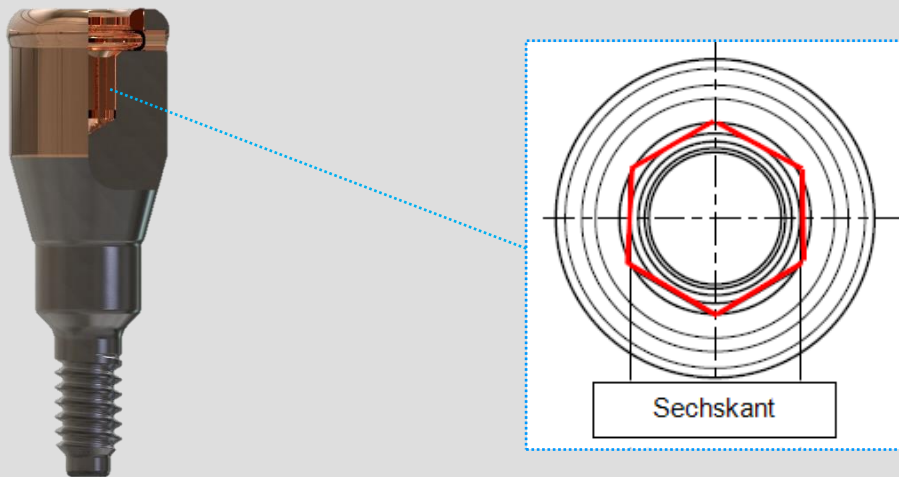
- A specially applied adhesive layer ensures that the coating adheres as well as possible to the base material titanium. In addition, the zirconium carbonitride surface layer is reinforced by five graded layers to bridge the hardness gap between the softer base material Titan Grade 5 (330-390 HV) and the very hard ZrCN top layer (3200 HV).



Advantages of the Docklocs® Attachment System

Additional Screw-in-Mechanism

The industry standard .050"/1,25 mm* hexagonal screw mechanism simplifies insertion into the dental implant.



Optimized Retention Housing

The retention housing is provided with additional horizontal grooves for improved resistance to vertical and horizontal movement. The red anodized surface enhances aesthetics and prevents the grey translucency of the surface on thin denture material.

